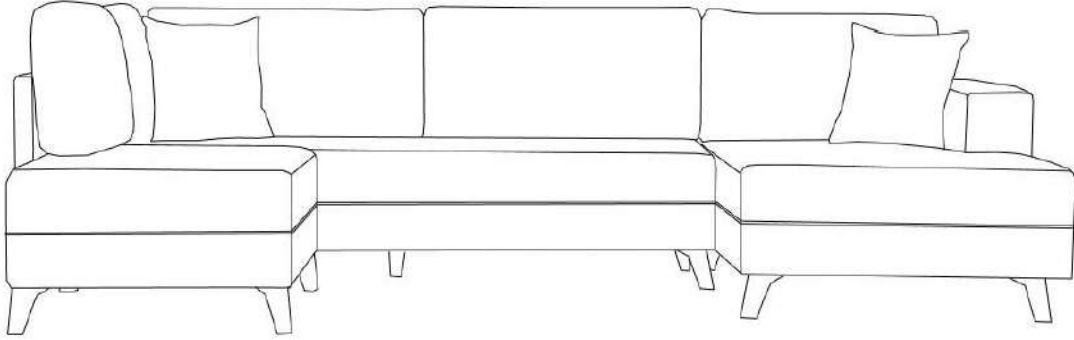


Installation and User Guide

Product features:

Fabric	: PES Woven Linen Textured Fabrics are used. The cushions are digitally printed %PES fabrics.
Foam	: 28 DNS Medium Soft Gray Foam, cushion fillings are a mixture of fiber and foam.
Leg	: Black hard plastic seat legs are used.
Frame	: Produced with a combination of natural fir timber and chipboard and necessary fasteners.
Product Nature	: It is produced with materials suitable for the environment and children's health.
Package	: Packed with furniture packaging and protected with thin nylon to prevent dust from entering.
Package Qty	: The product is sent in 3 packages.
Installation	: Only the legs of the product are shipped disassembled.
Assembly	: You can mount the product feet with a cordless screwdriver.
Content	: Feet and fasteners are included in the product package.



Product Measurements:

Width	: 300 cm
Back Height	: 78 cm
Arm Height	: 65 cm
Depth	: 80 cm
Reach Depth Right	: 157 cm
Reach Depth Left	: 202 cm
Session Depth	: 65 cm
Internal Width	: 12 cm
(Excluding Arms)	: 43 cm
Bed Dimensions	: 180 cm
Capacity	: 149*219 cm
	: 4 Kişi / 450 KG

Package Dimensions / Sizes / Weights

1. Package 202*80*55 / 296 DESI / 47 KG
2. Package 158*96*55 / 278 DESI / 39 KG
3. Package 120*80*55 / 176 DESI / 22 KG

Installation and User Guide

Putting excessive weight on the product during use, uncontrolled displacement, and exposure to direct and continuous sunlight are factors that will shorten the life of the product.

Depending on the region you live in, removing dust and particles from your product with an electric vacuum cleaner at regular intervals will support both hygiene and easy cleaning in case of stains.

Professional cleaning using machines is recommended for all fabric upholstered products. If cleaning must be done by you, add white soap to warm water and use a clean washcloth or white cloth. You can do this by rubbing the surface with a damp cotton cloth in the same direction. For rinsing, you can rinse the surface with water, using a piece of cloth and a washcloth. Substances such as heavy detergents and bleach should not be used on upholstery fabrics, as they may damage the texture and color of the fabric.

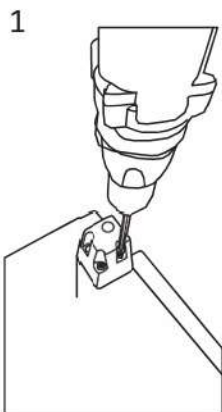
Setup:

This product can be installed by an experienced person or a helper and a total of two people. If you need to do such a job for the first time, all you need is a place to put it upside down and a rechargeable screwdriver. Installation materials for the product are sent with the product.

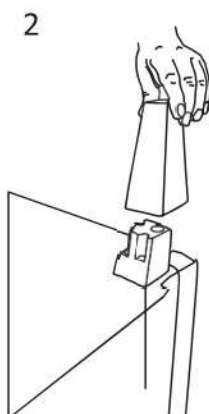
Materials required from the installation package:

12 Pieces of Legs

52 Pieces of Legs and Connection screws



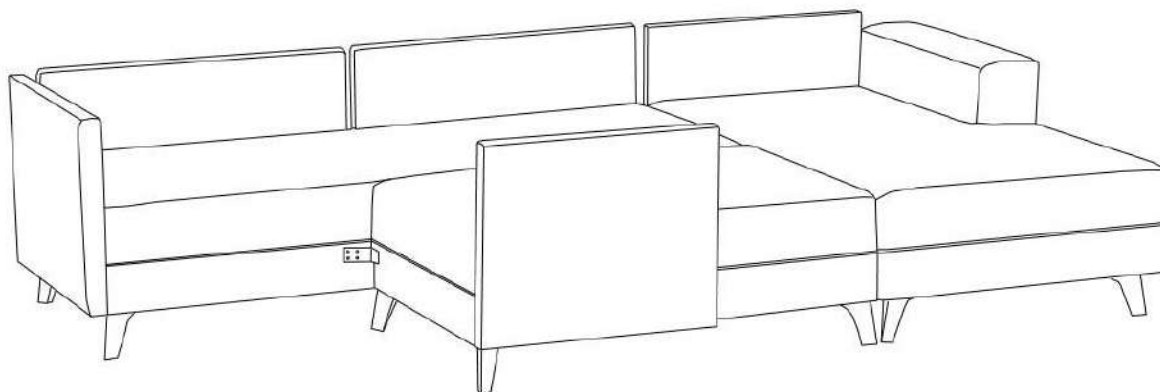
In step 1, place the inner part of the plastic foot towards the corner of the product and screw it.



2. Place the black outer cover on the inner part you connected and turn the product upside down on its feet.

First, place the inner connection part of the legs towards the corner and screw it.

3. At this stage, place and screw the corner seat with its legs attached, as shown in the figure below, to attach the hinge attached by us to the other part.



Adjust the back pillows and throw pillows sent with the products by hand and place them in their places.

Your product is ready for use. We hope you will use it in good days.