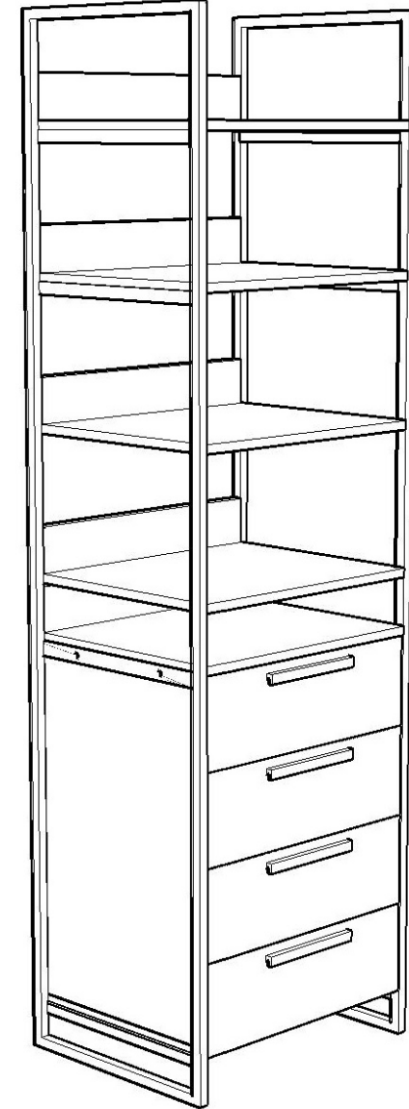
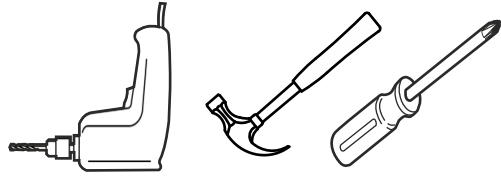
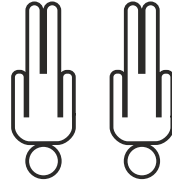


**DYNAMIC 10**  
**4 ÇEKMECELİ RAFLI DOLAP MODÜL**  
**KURULUM ŞEMASI**  
**ASSEMBLY GUIDE**





Bu modülün kurulumu için gerekli olan araçlar. / The necessary tools (not included)



Bu modül iki kişi tarafından kurulmalıdır. / This unit should be assembled by two persons.

## AKSESUAR LİSTESİ / ACCESSORY LIST

	<b>MİNİ-FİX MİL x 16</b> ( MİNİ-FİX SHAFT )		<b>MİNİ-FİX GÖVDE x 16</b> ( MİNİ-FİX BODY )		<b>KAVELA x 40</b> ( DOWEL )		<b>DÜBEL x 40</b> ( PEG )		<b>AYAK KEÇESİ x 4</b> ( FOOT SEAL )		<b>40 CM TELESKOPİK RAY x 4 TK.</b> ( 40 CM TELESCOPIC RAIL )		<b>192 LİK KULP x 4</b> ( HOLDER )		<b>KULP VIDASI x 8</b> ( HOLDER SCREW )		<b>3,5 X 18 SUNTA VIDASI x 50</b> ( 3,5X18 SCREW )		<b>ARKALIK KÖŞE x 8</b> ( CORNER WEDGE )		<b>ÇEKTİRME VIDASI x 20</b> ( PULLING SCREW )		<b>KABİN VIDASI x 16</b> ( CABINET SCREW )		<b>MODÜL BİRLEŞİME APARATI x 1</b> ( PLASTIC ) SİYAH BLACK
--	--	--	---	--	---------------------------------	--	------------------------------	--	---	--	--	--	---------------------------------------	--	--	--	---	--	---	--	--	--	---	--	---

\* AKSESUARLARI GÖSTERİLDİĞİ GİBİ DÜZ BİR ZEMİN ÜZERİNDE TAKINIZ...  
\* ÜRÜNÜ KURARKEN MONTAJ SIRASINI TAKİP EDİNİZ  
\* FİX THE ACCESSORIES AS SHOWN FOLLOW THE  
INSTALLATION SEQUENCE WHILE INSTALLING THE PRODUCT.

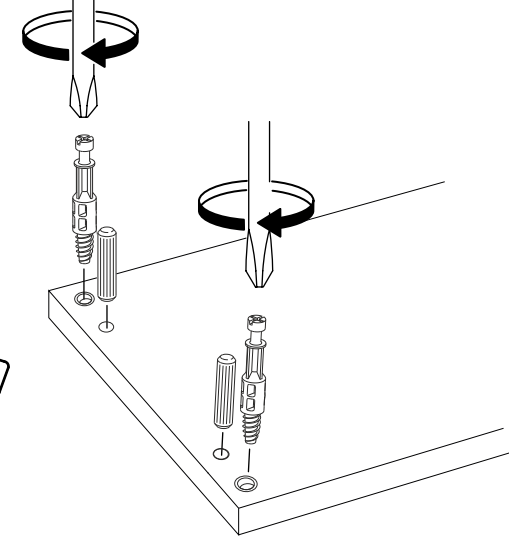
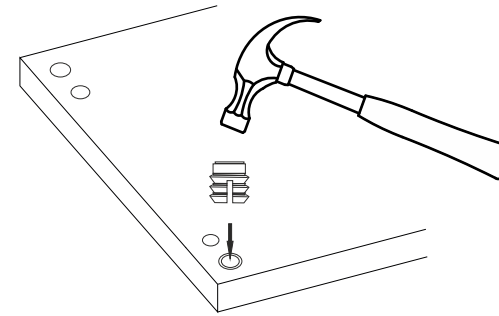
1

# DİKKAT !! / ATTENTION !!

Minifiks ve Kavela ürünlerimizde kullanılan ana bağlantı malzemesidir. Montaja başlamadan önce lütfen aşağıdaki çizimleri kontrol ederek, anlamaya çalışın...

Minifix and Dowel is the main connection material used in products. Before starting assembly, please check the drawings below...

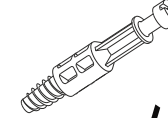
## Minifix Dübeli ( PEG )



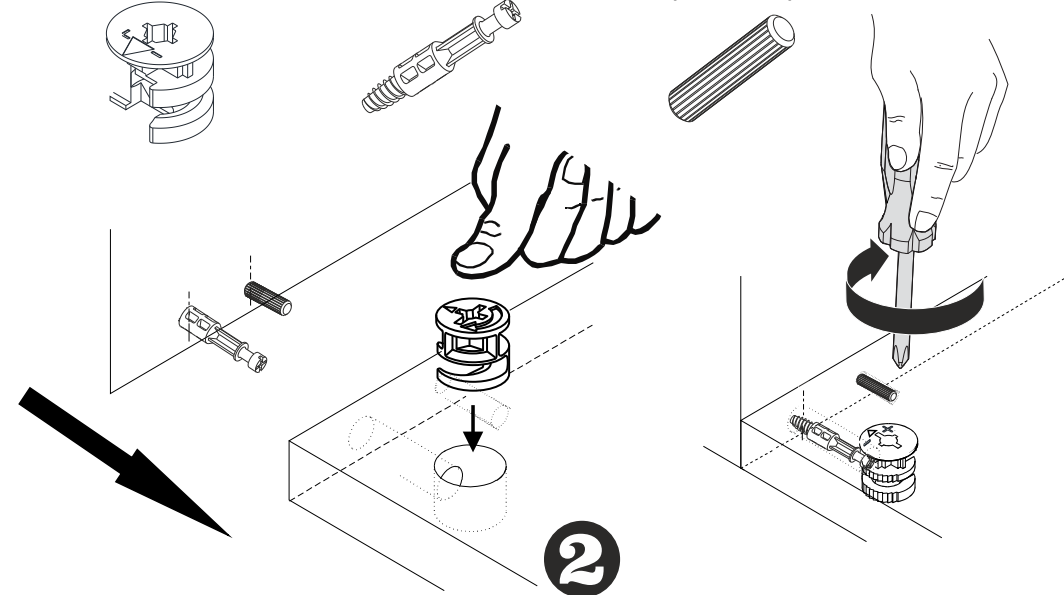
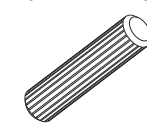
## Minifix Gövde ( MINIFIX BODY )



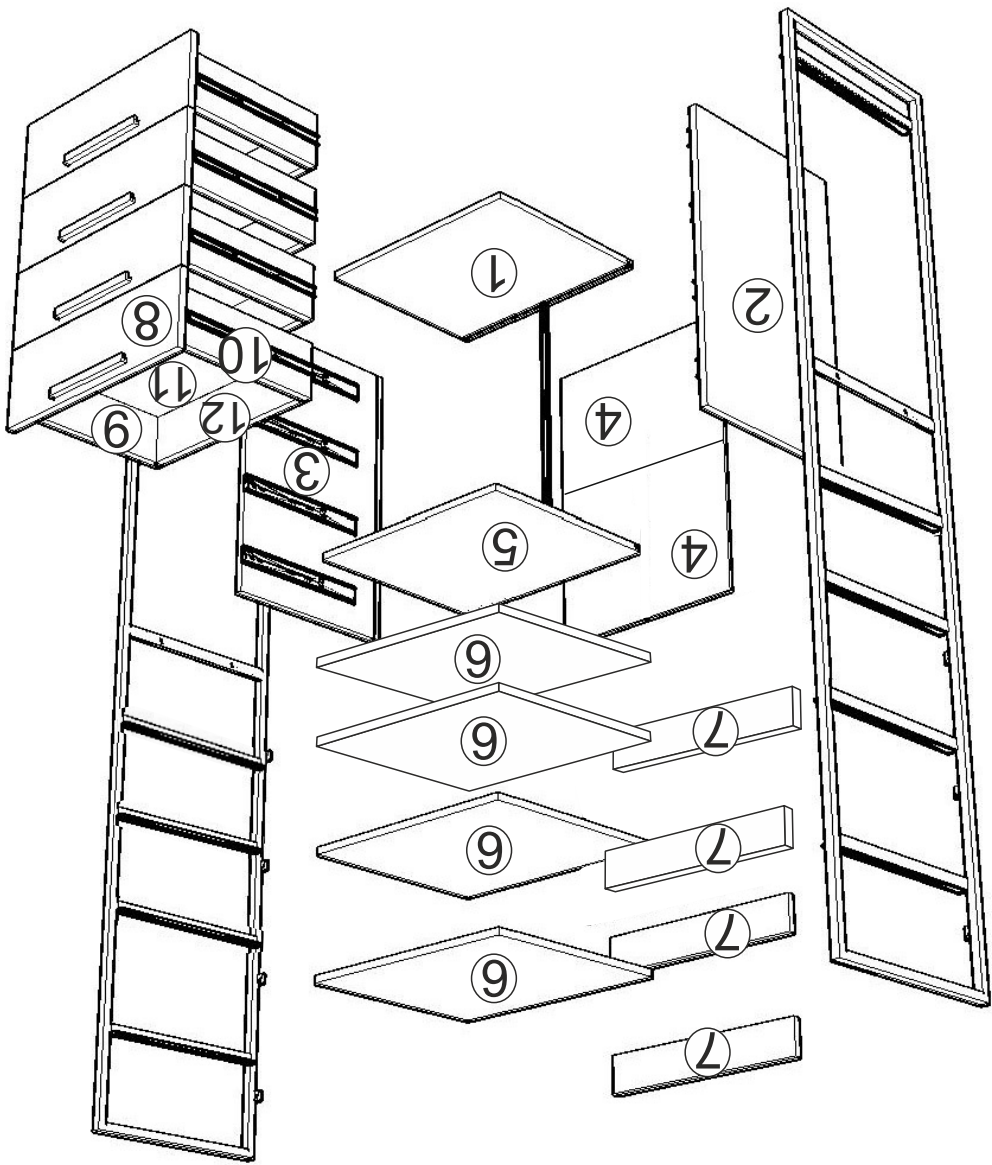
## Minifix Mil ( MINIFIX SHAFT )



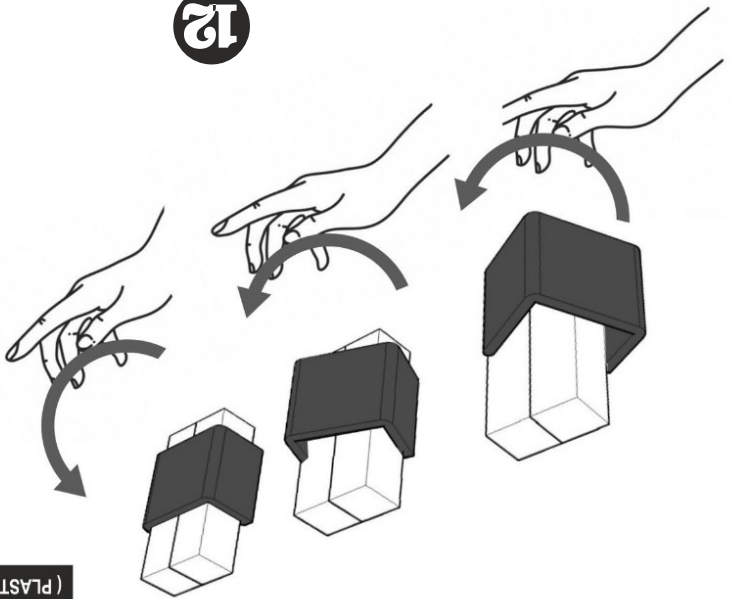
## Kavela ( DOWEL )



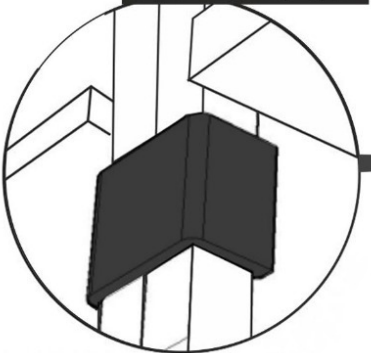
3



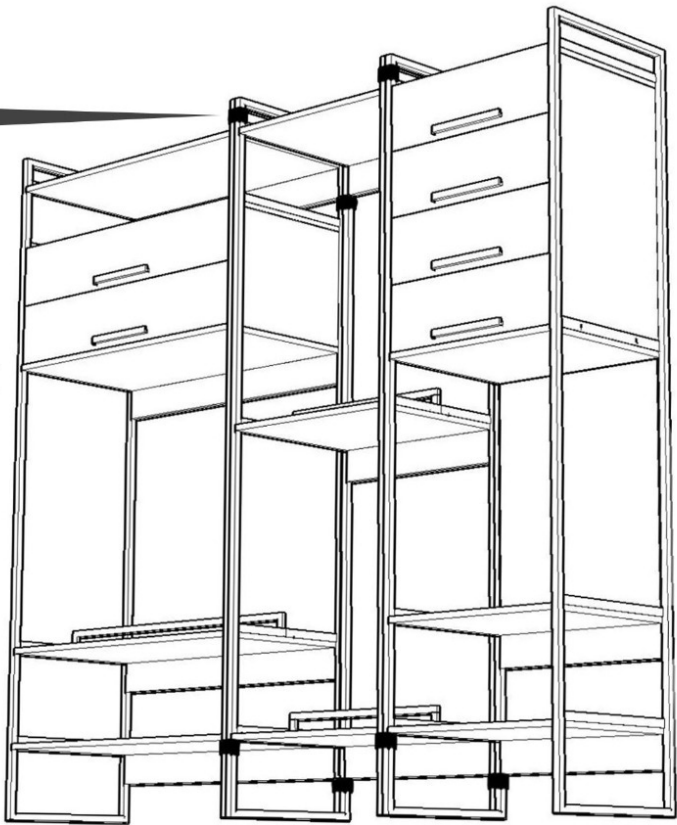
12

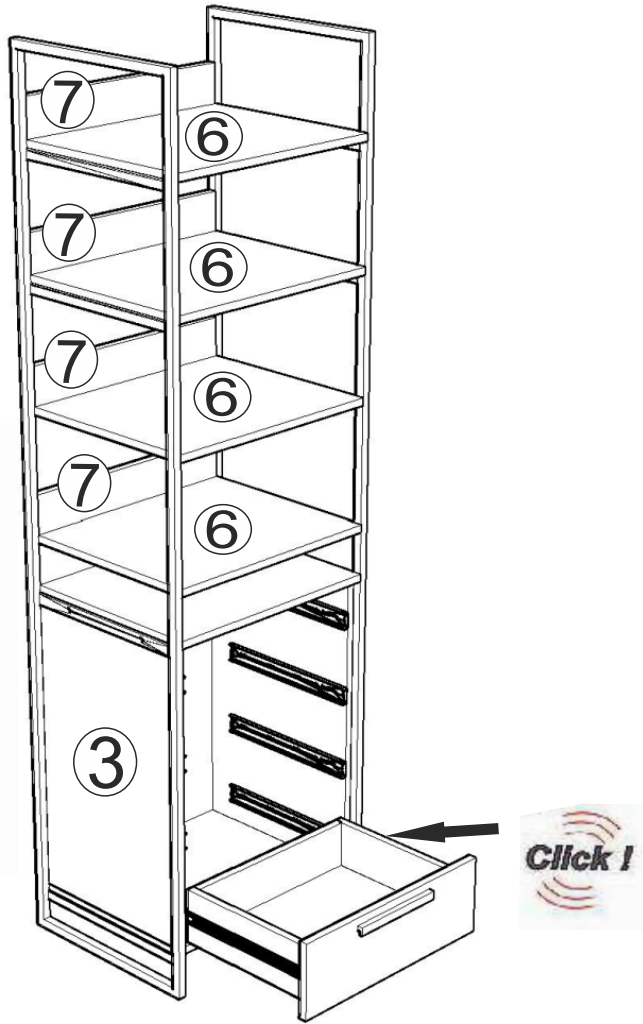


MODÜL BİRLEŞTİRME APARATI ( PLASTIC MODULE FIXING ) X4

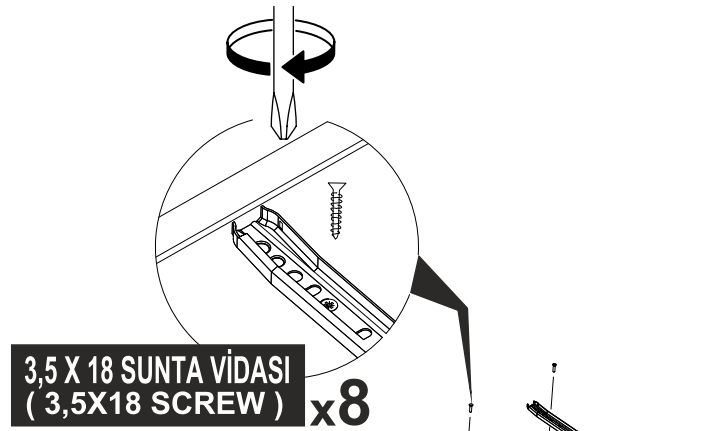


MODÜL BİRLEŞTİRME DETAYI ( MODULE FIXING DETAIL )

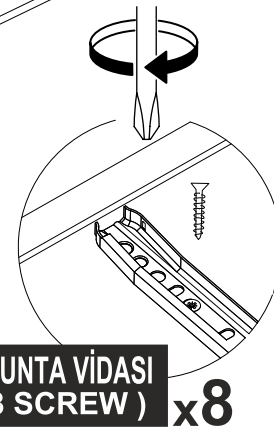
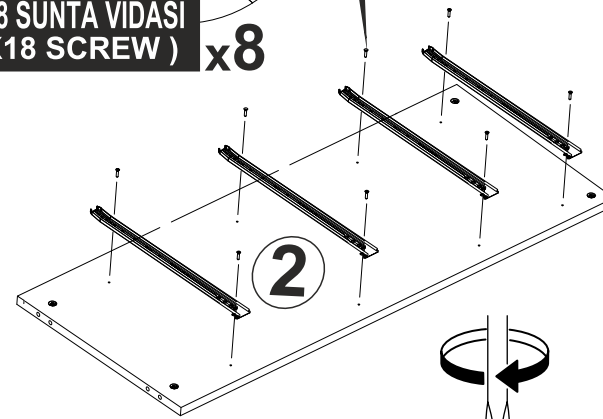




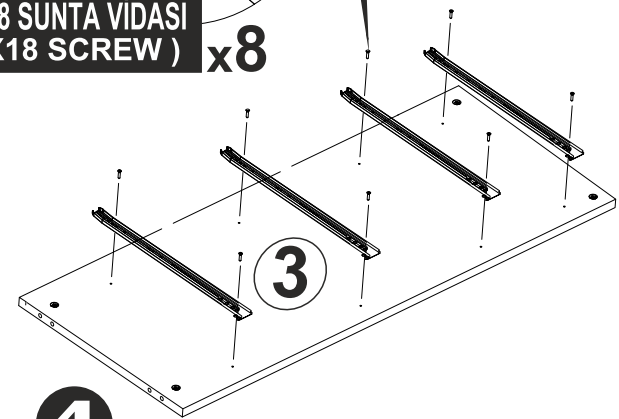
11



3,5 X 18 SUNTA VİDASI  
( 3,5X18 SCREW ) x8

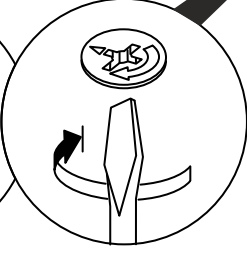
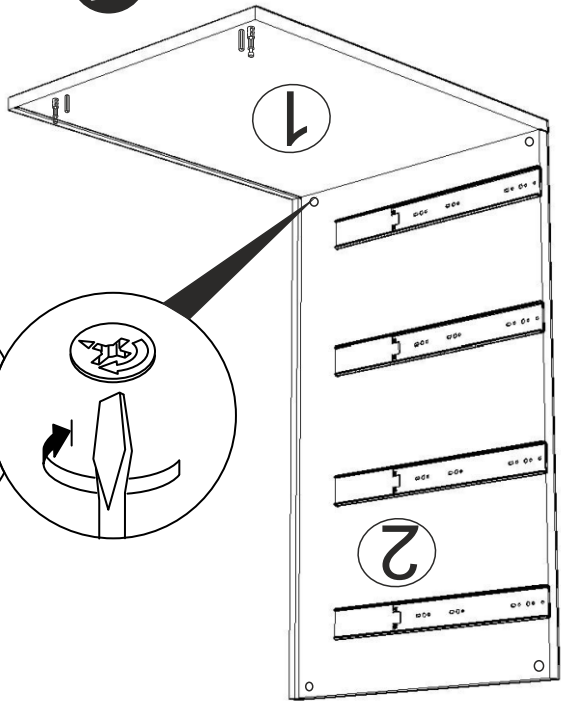


3,5 X 18 SUNTA VİDASI  
( 3,5X18 SCREW ) x8

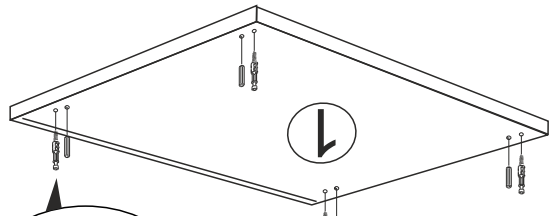


4

5

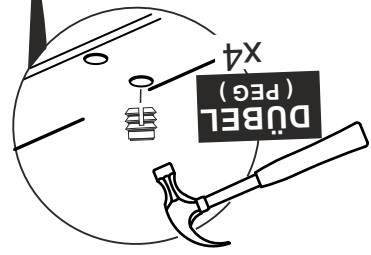


MINİFİX GÖVDE (MINIFIX BODY) X2



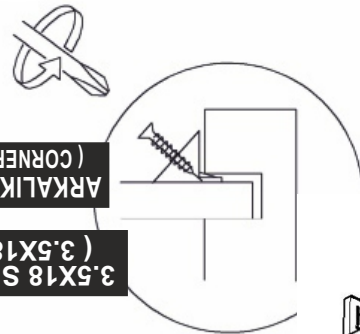
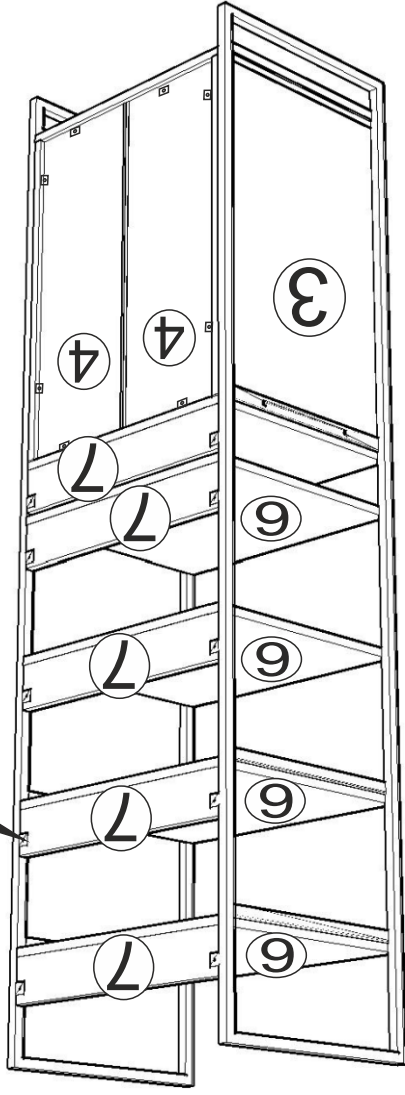
KAVELA (DOWEL) X4

MINİFİX MİLİ (MINIFIX SHAFT) X4



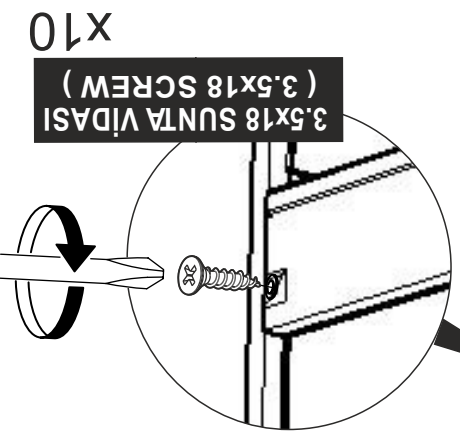
DÜBEL (PEG) X4

10

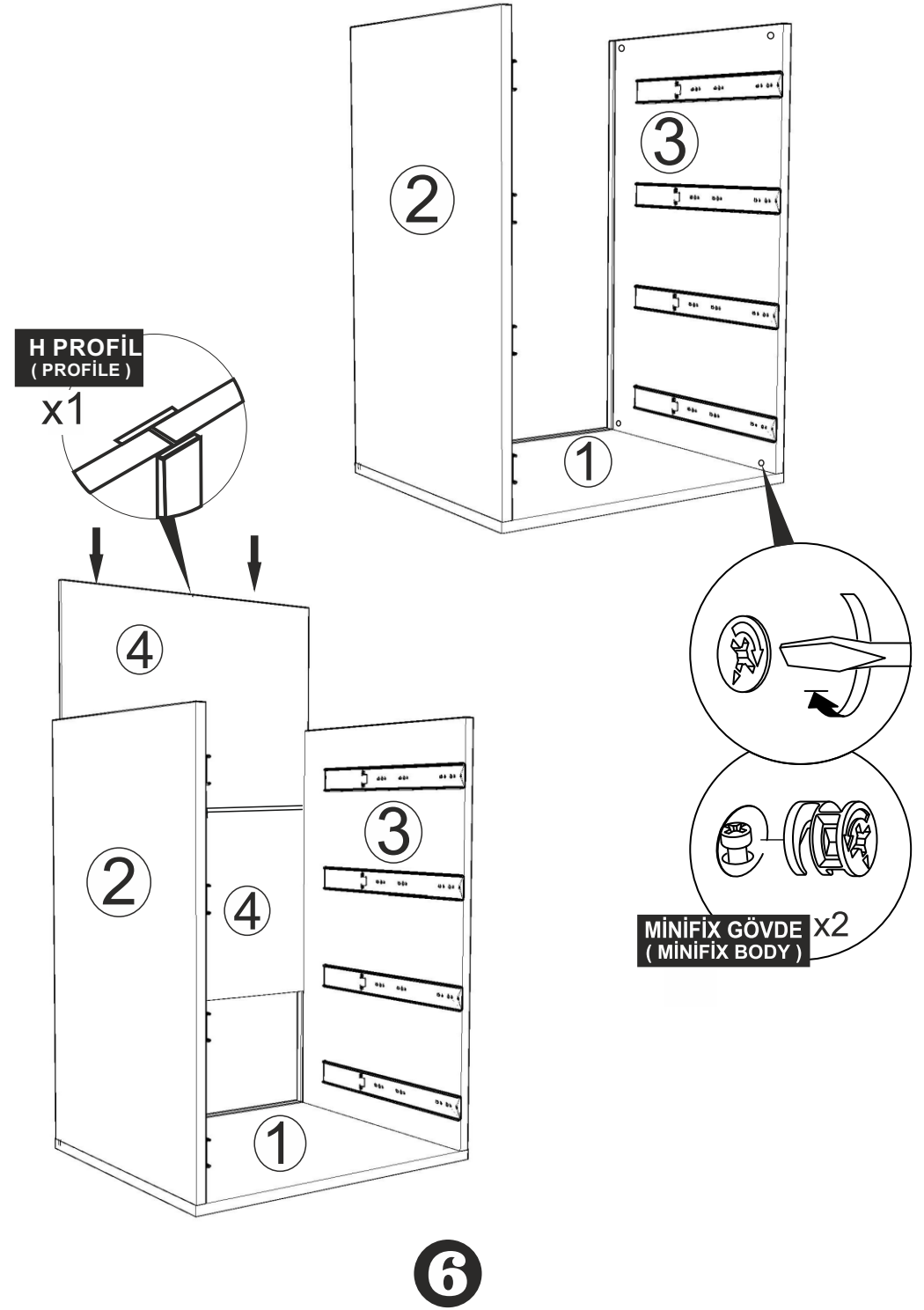
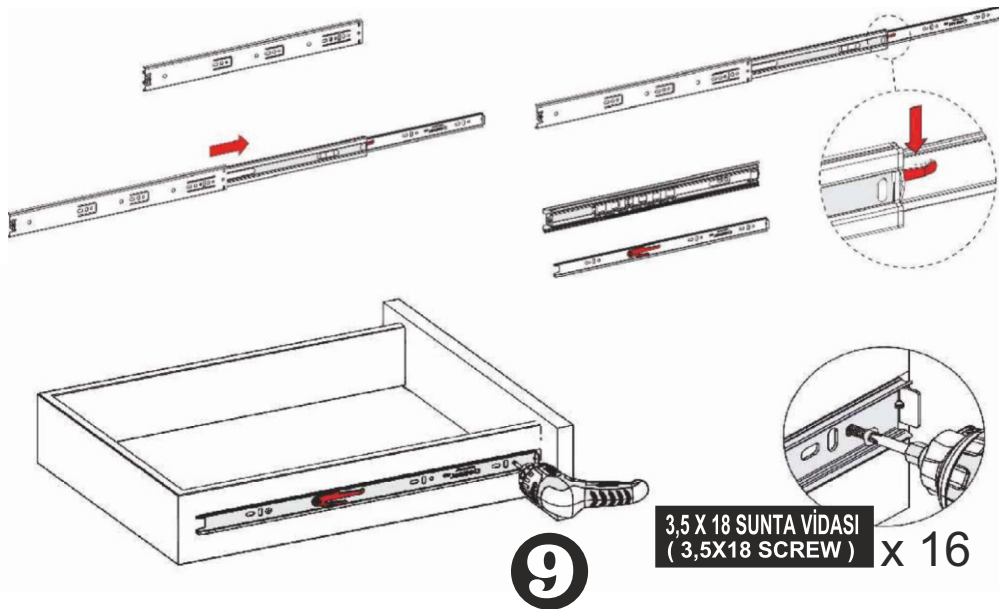
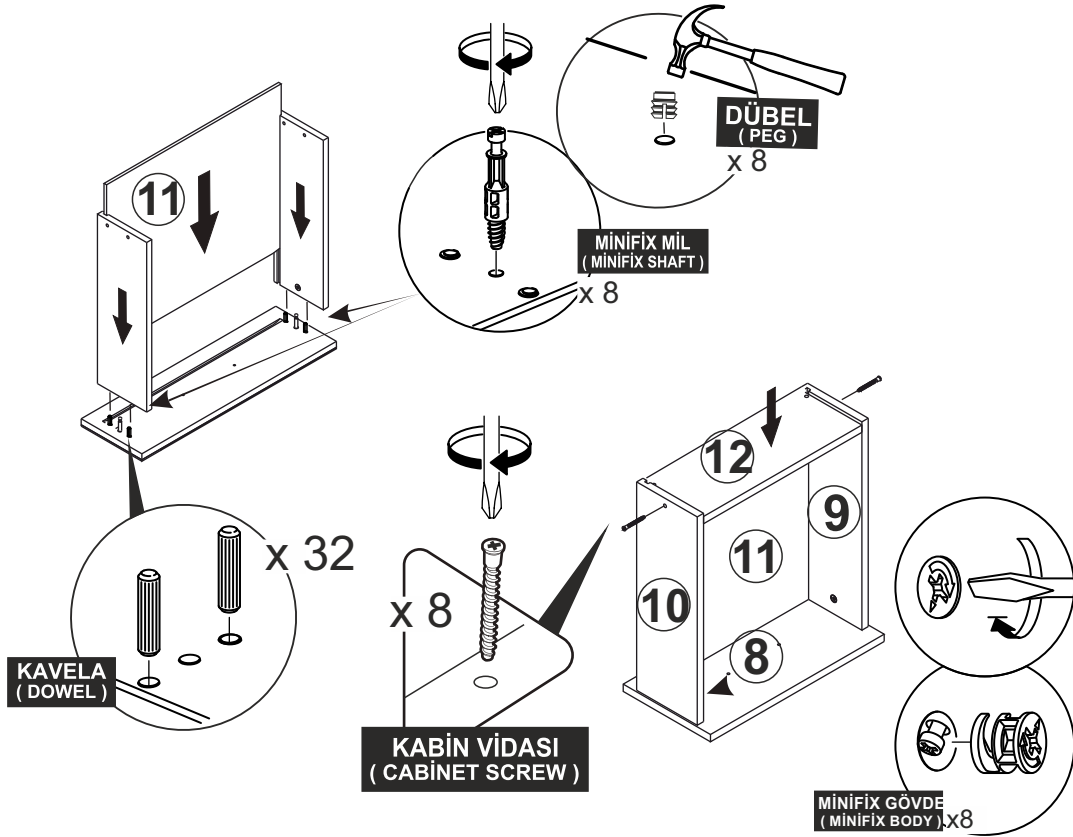


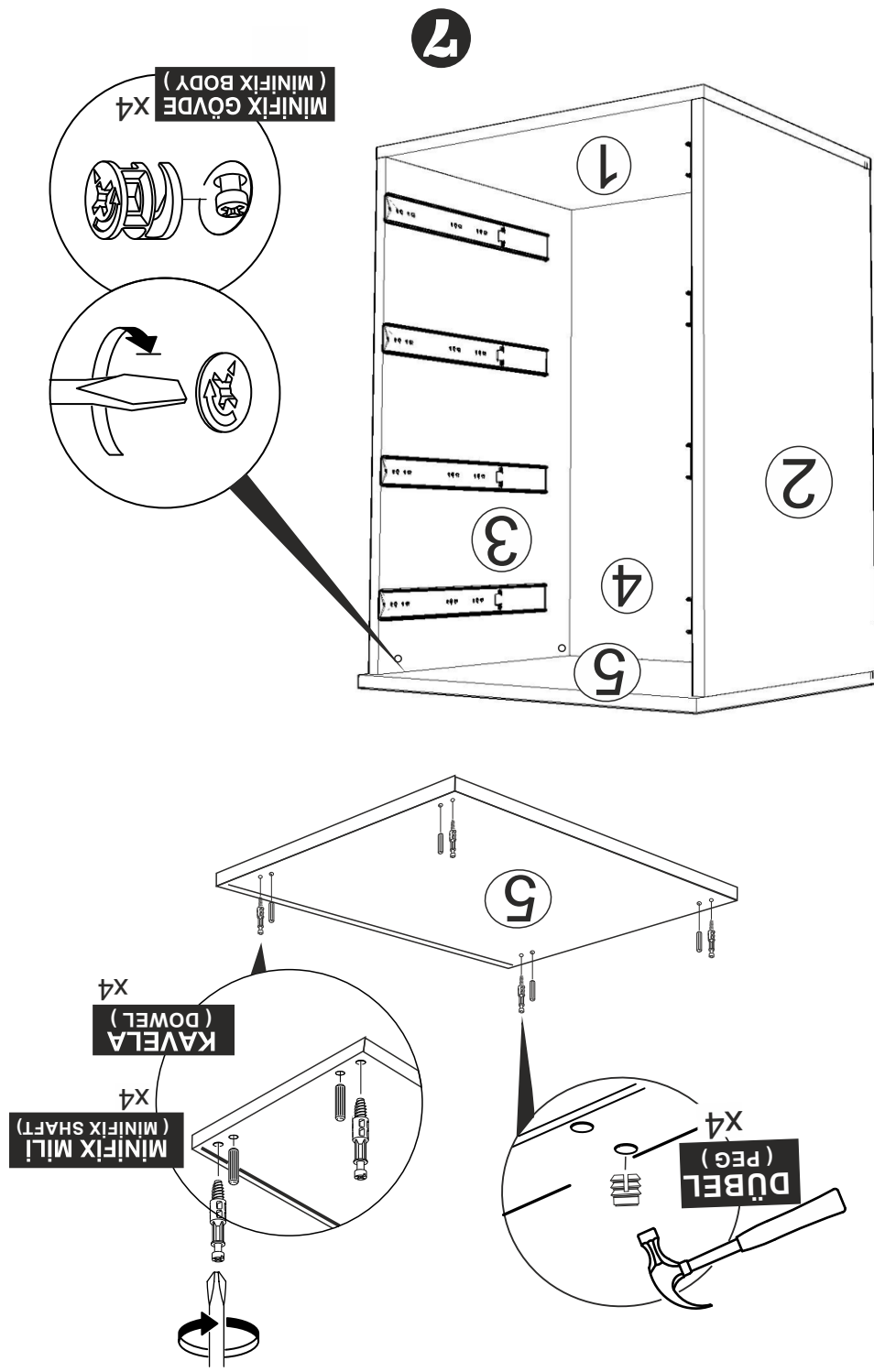
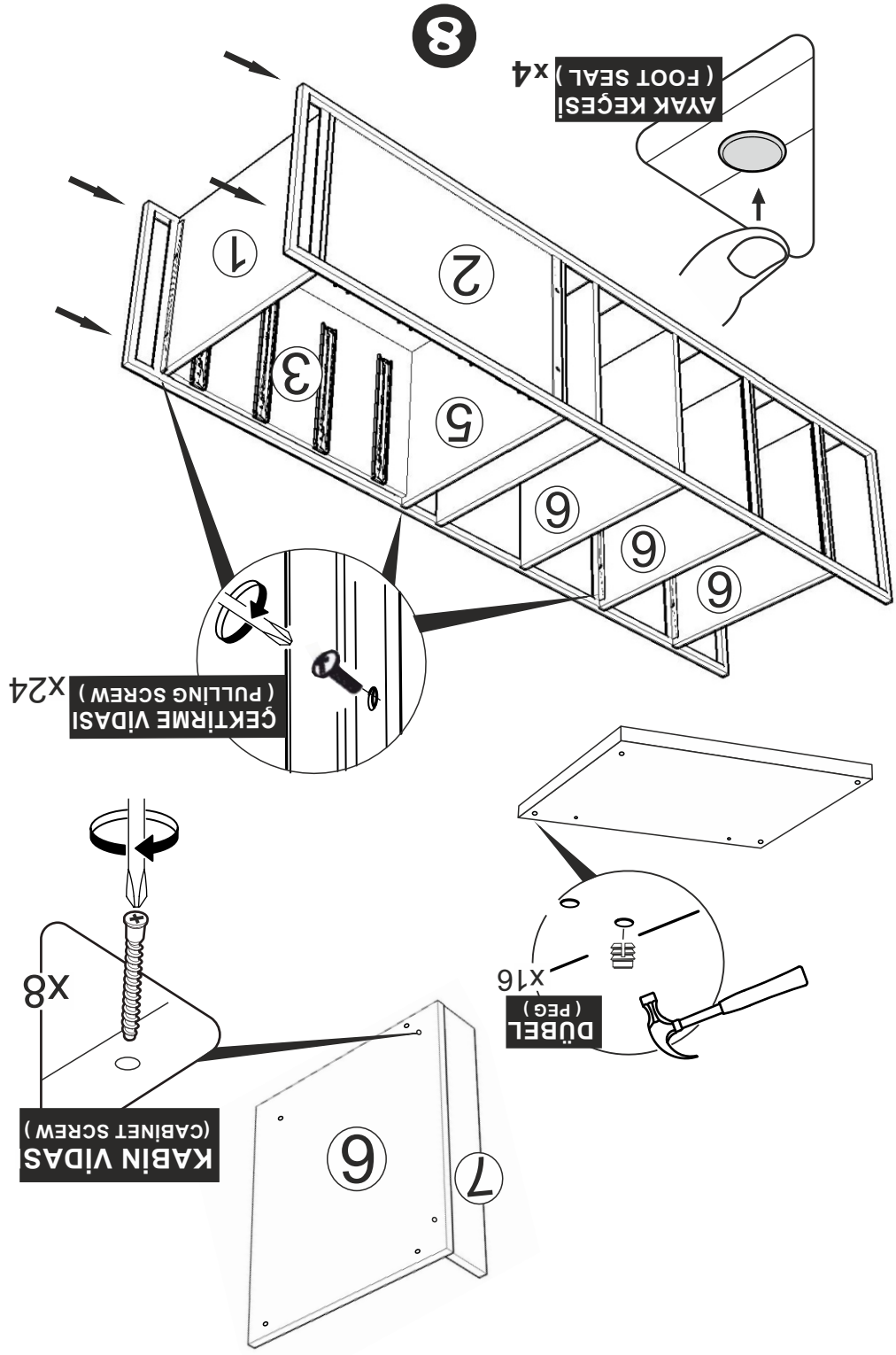
ARKALIK KÖŞE X 8 (CORNER WEDGE)

3.5X18 SUNTA VIDASI (3.5X18 SCREW) X8



3.5X18 SUNTA VIDASI (3.5X18 SCREW) X10







# DYNAMIC 05

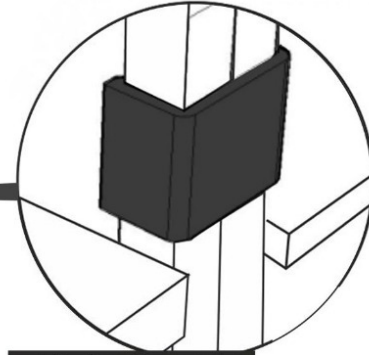
## 7 RAFLI DOLAP DAR MODÜL

### KURULUM ŞEMASI

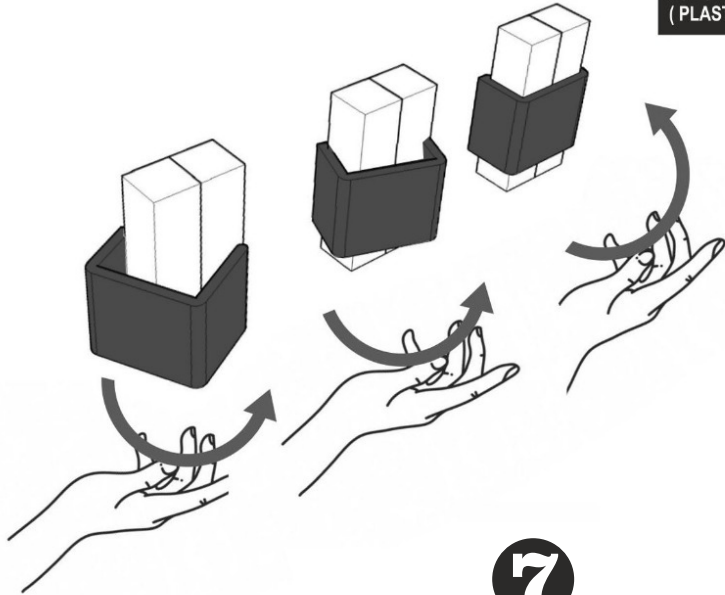
#### ASSEMBLY GUIDE



MODÜL BİRLEŞTİRME DETAYI  
(MODULE FIXING DETAIL)



MODÜL BİRLEŞTİRME APARATI  
(PLASTIC MODULE FIXING) x4

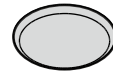


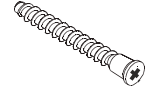
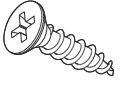


7



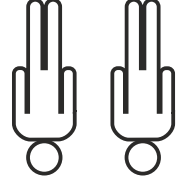
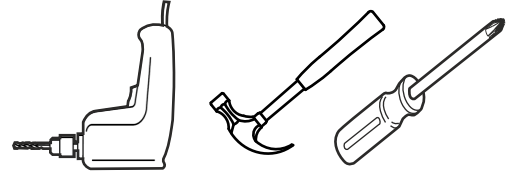
1

\* AKSESUARLARI GÖSTERİLDİĞİ GİBİ DÜZ BİR ZEMİN ÜZERİNDE TAKINIZ...  
 \* ÜRÜNÜ KURARKEN MONTAJ SIRASINI TAKİP EDİNİZ  
 \* FİX THE ACCESORIES AS SHOWN FOLLOW THE  
 INSTALLATION SEQUENCE WHILE INSTALLING THE PRODUCT.

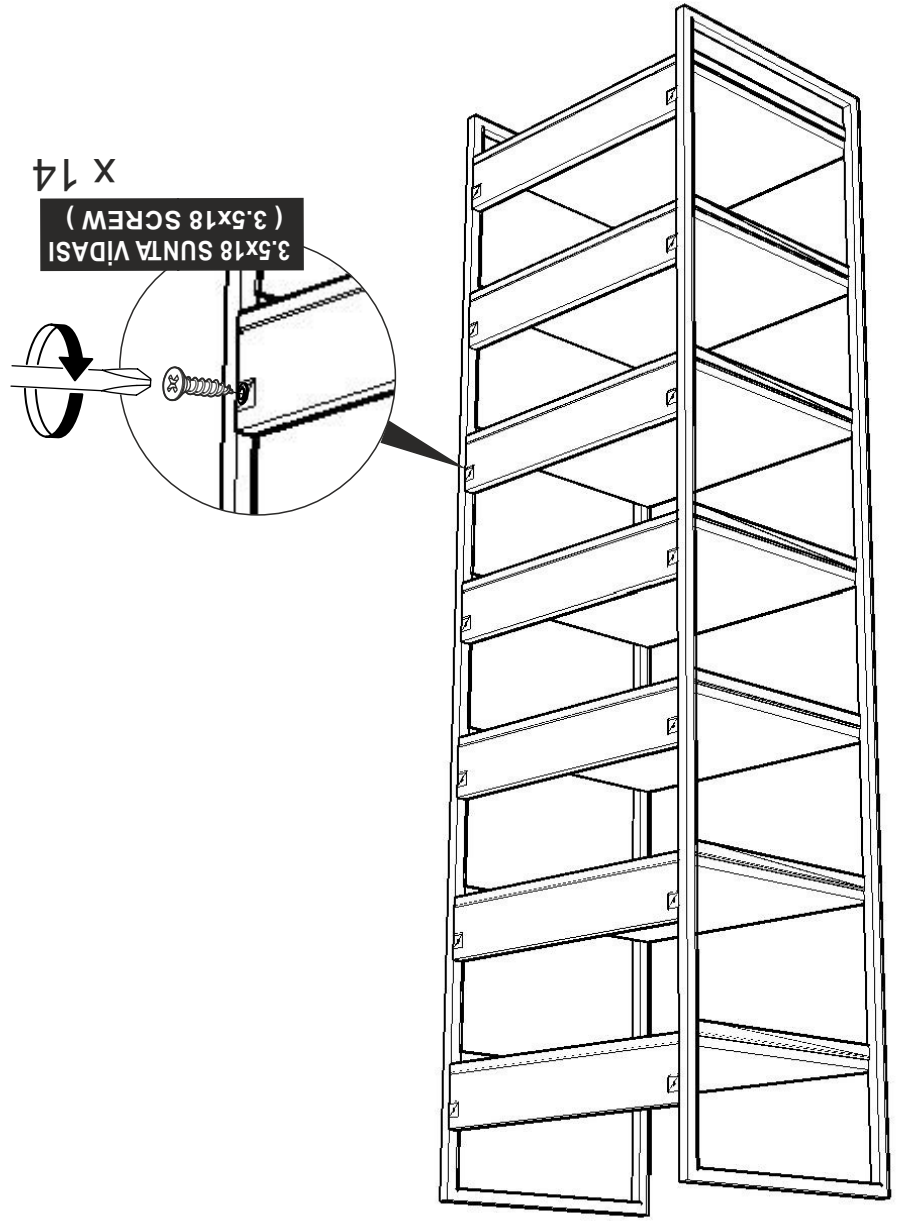
	<b>AYAK KEÇESİ x 4</b> ( FOOT SEAL )		<b>MODÜL BİRLEŞİRME APARATI x 4</b> ( PLASTIC ) SİYAH BLACK
	<b>DÜBEL x 28</b> ( PEG )		<b>ÇEKİRME VIDASI x 28</b> ( PULLING SCREW )
	<b>KABİN VIDASI x 14</b> ( CABINET SCREW )		<b>3,5 X 18 SUNTA VIDASI x 14</b> ( 3,5X18 SCREW )

## AKSESUAR LİSTESİ / ACCESSORY LIST

Bu modül iki kişi tarafından kurulmalıdır.  
 This unit should be assembled by two persons.



9

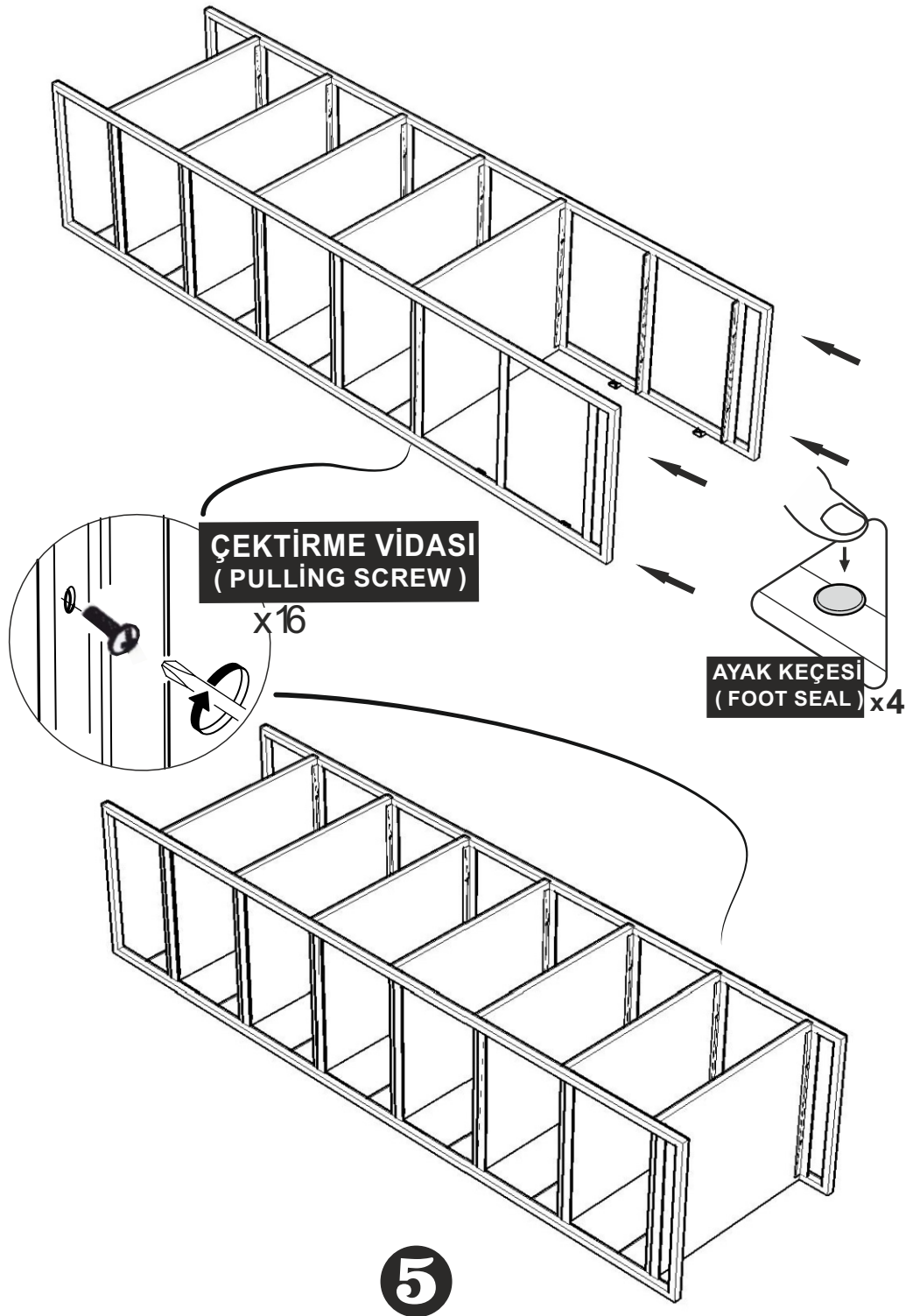


## DİKKAT !! / ATTENTION !!

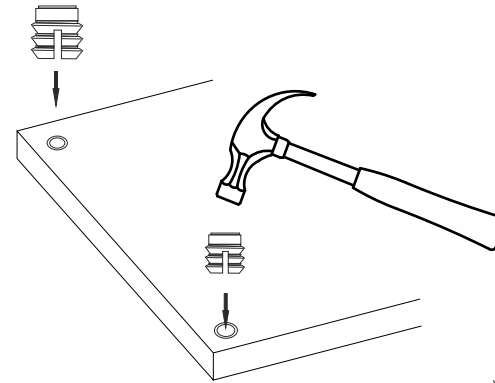
Dübel ve Çektirme vidası ürünlerimizde kullanılan ana bağlantı malzemesidir.

Montaja başlamadan önce lütfen aşağıdaki çizimleri kontrol ederek, anlamaya çalışın...

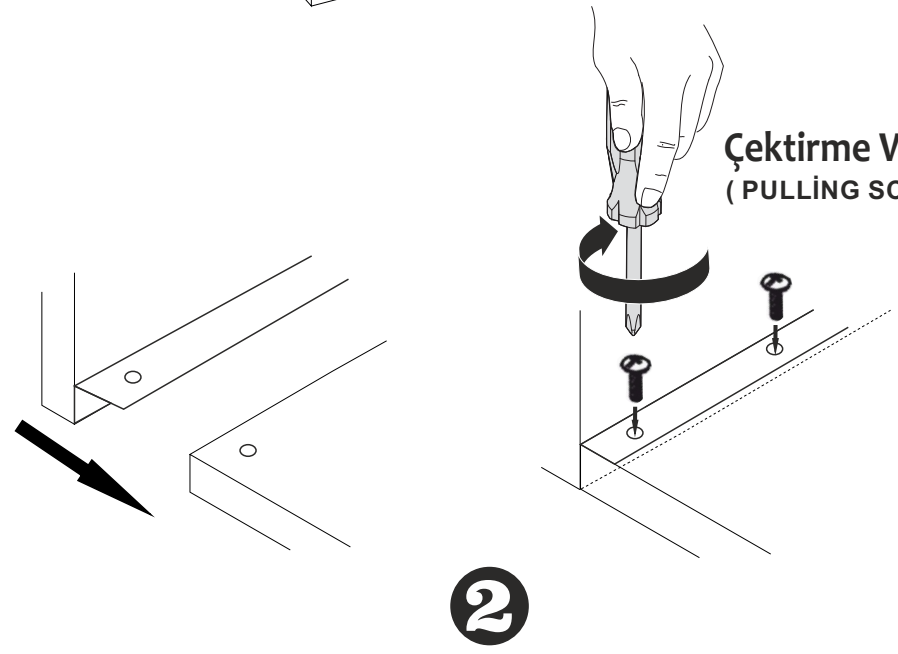
Peg and Pulling Screw is the main connection material used in products. Before starting assembly, please check the drawings below...



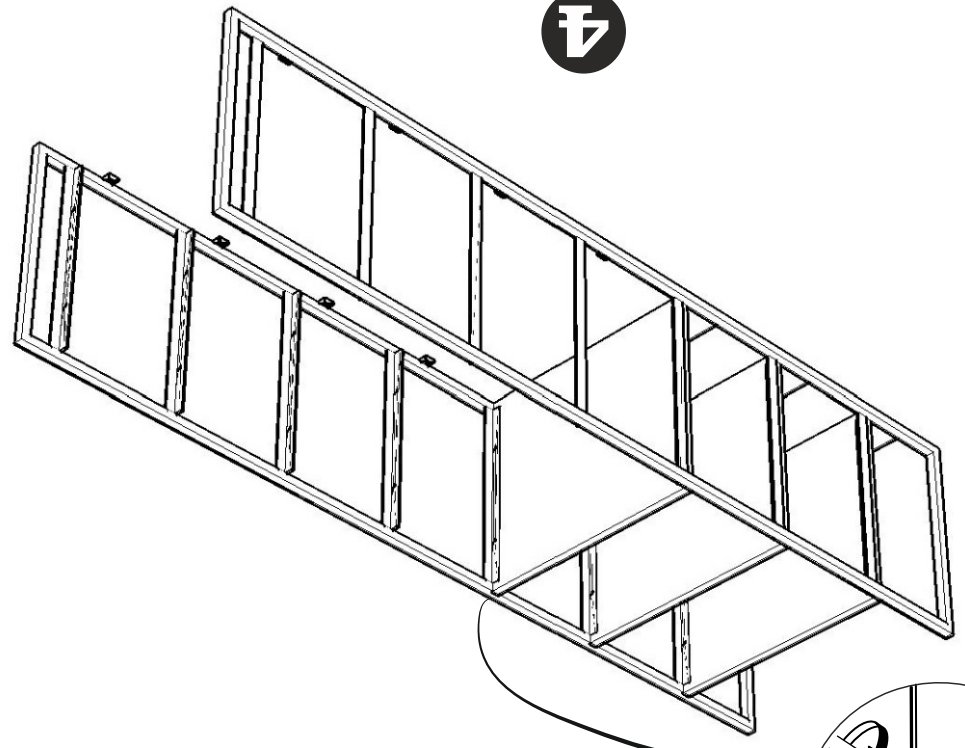
### Dübel (PEG)



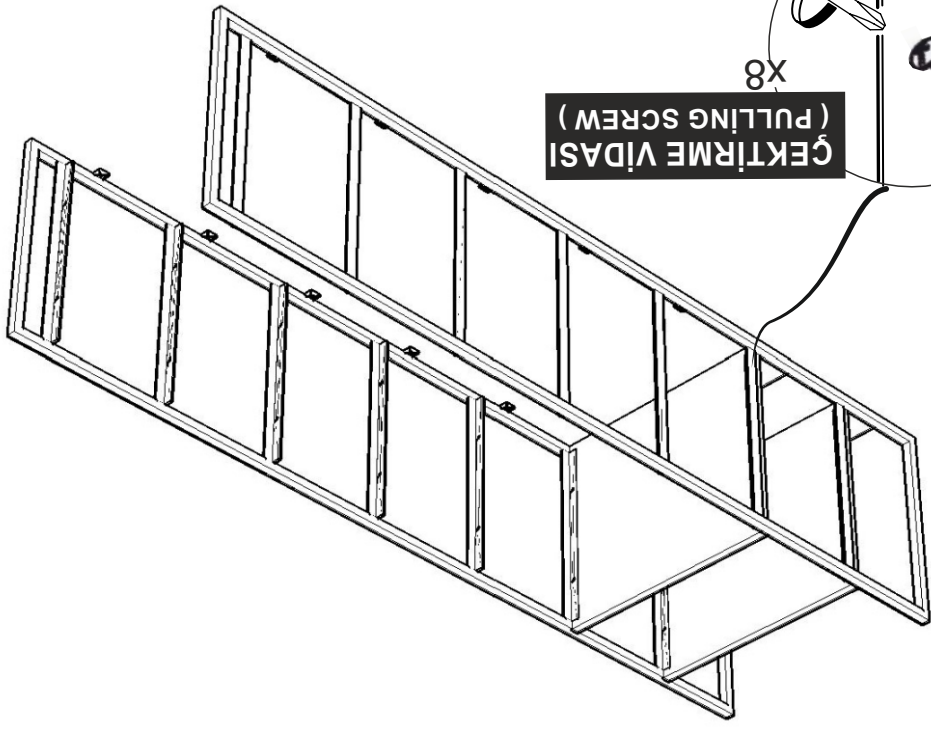
### Çektirme Vidası ( PULLING SCREW )



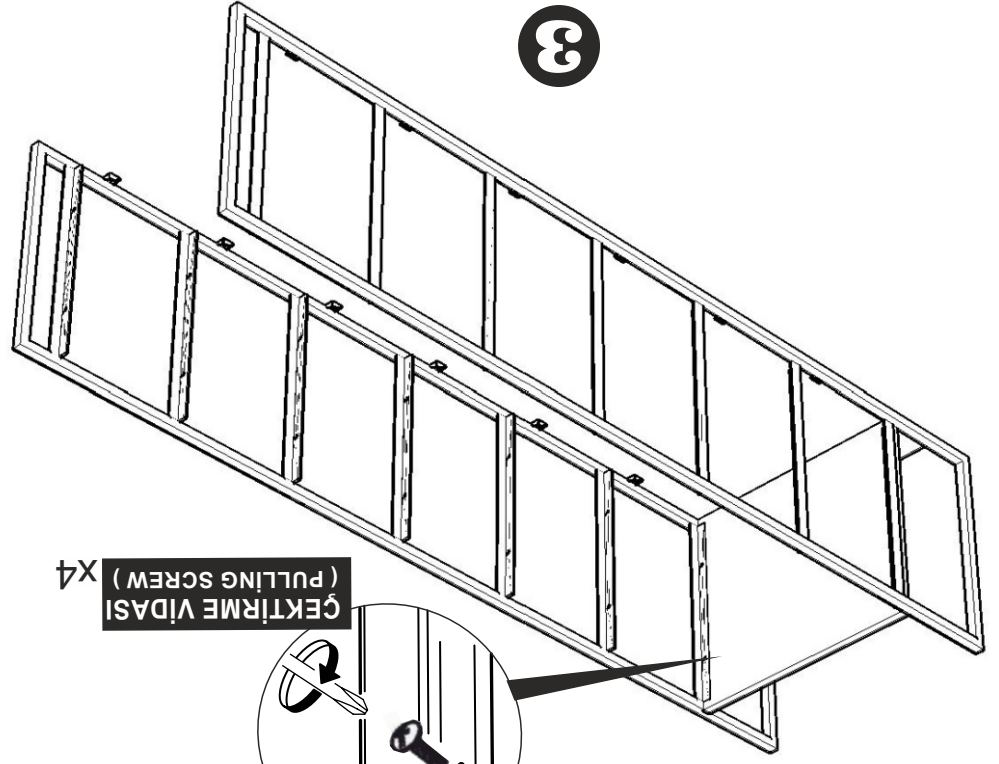
4



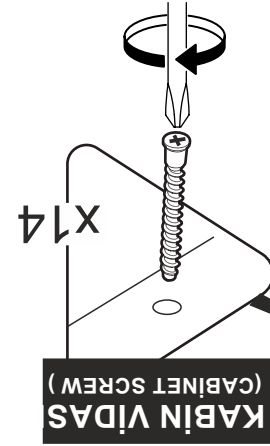
ÇEKİRME VIDASI  
(PULLING SCREW)  
X8



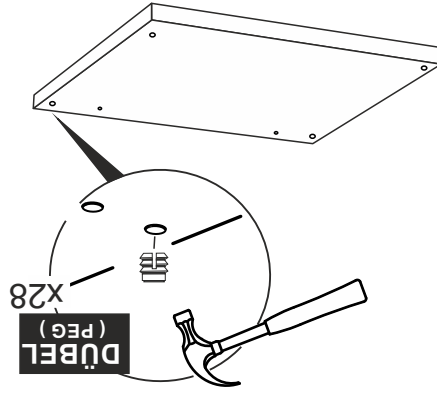
3



ÇEKİRME VIDASI  
(PULLING SCREW)  
X4

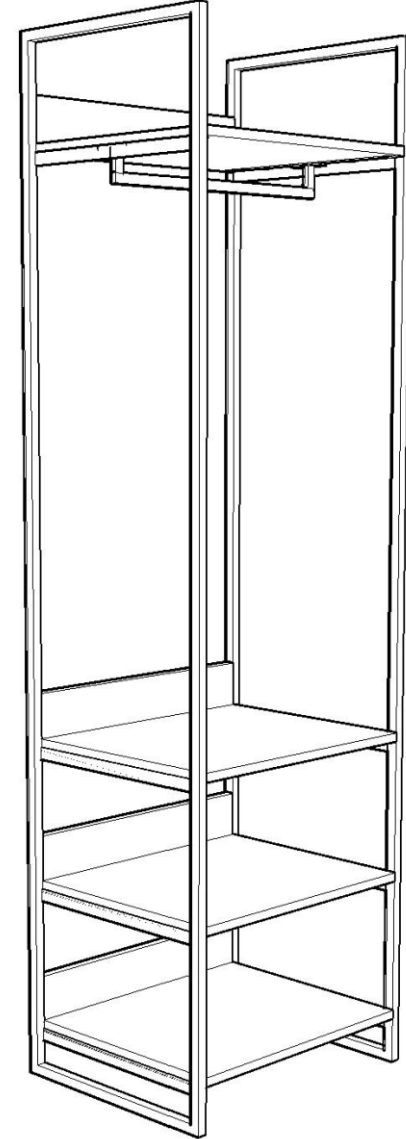


KABİN VIDAS  
(CABINET SCREW)  
X14

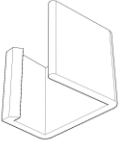


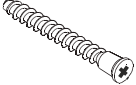




DÜBEL  
(PEG)  
X28

**DYNAMIC 03**  
**4 RAFLI ASKILI DAR MODÜL**  
**KURULUM ŞEMASI**  
**ASSEMBLY GUIDE**

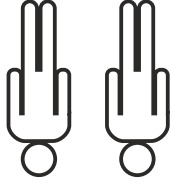


\* AKSESUARLARI GÖSTERİLDİĞİ GİBİ DÜZ BİR ZEMİN ÜZERİNDE TAKINIZ...  
 \* ÜRÜNÜ KURARKEN MONTAJ SIRASINI TAKİP EDİNİZ  
 \* FİX THE ACCESORIES AS SHOWN FOLLOW THE  
 INSTALLATION SEQUENCE WHILE INSTALLING THE PRODUCT.

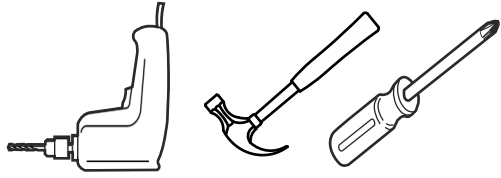
		MODÜL BİRLEŞTİRME APARATI x 4 ( PLASTIC ) SİYAH BLACK	AYAK KEÇESİ x 4 ( FOOT SEAL )
			
3,5 X 18 SUNTA VIDASI X 8 ( 3,5X18 SCREW )	KABİN VIDASI x 8 ( CABINET SCREW )	ÇEKTİRME VIDASI x 20 ( PULLING SCREW )	DÜBEL x 20 ( PEG )
			

### AKSESUAR LİSTESİ / ACCESSORY LIST

Bu modül iki kişi tarafından kurulmalıdır.  
 This unit should be assembled by two persons.



Bu modülün kurulumu için gerekli olan araçlar.  
 The necessary tools (not included)



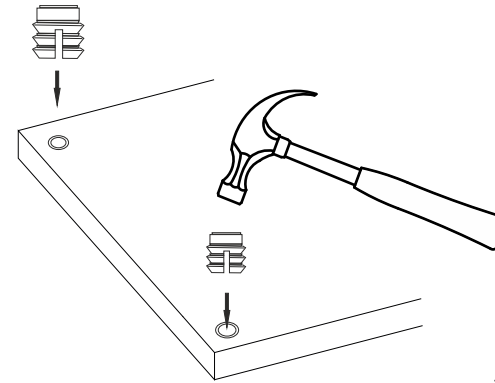
## DİKKAT !! / ATTENTION !!

Dübel ve Çektirme vidası ürünlerimizde kullanılan ana bağlantı malzemesidir.

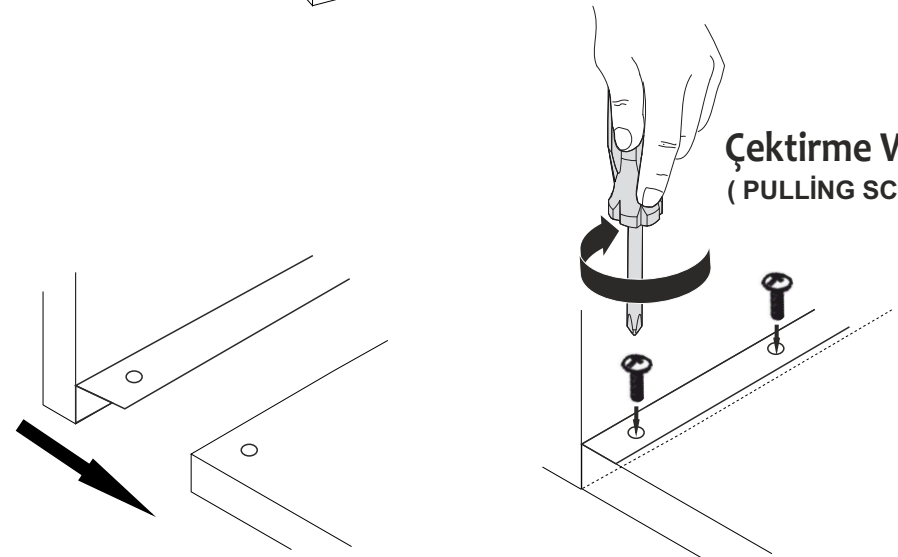
Montaja başlamadan önce lütfen aşağıdaki çizimleri kontrol ederek, anlamaya çalışın...

Peg and Pulling Screw is the main connection material used in products.  
Before starting assembly, please check the drawings below...

### Dübel (PEG)

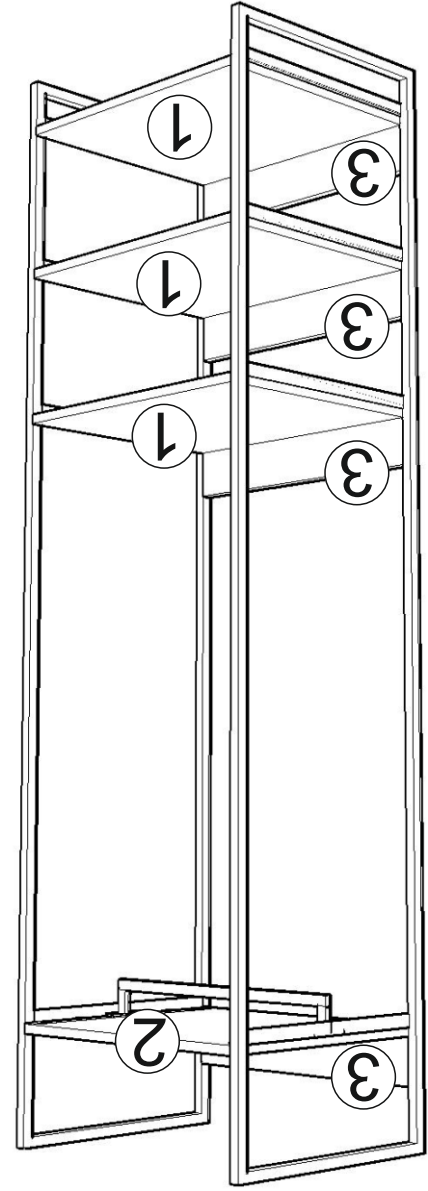


### Çektirme Vidası ( PULLING SCREW )



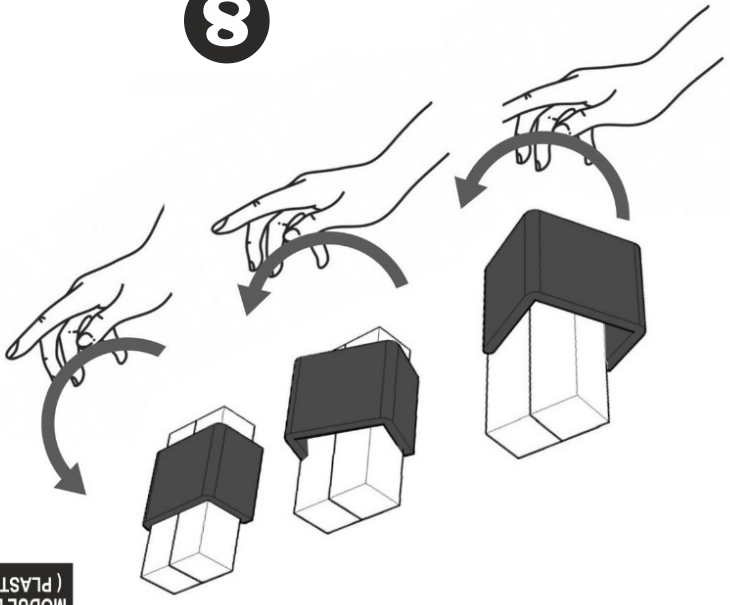
2

3

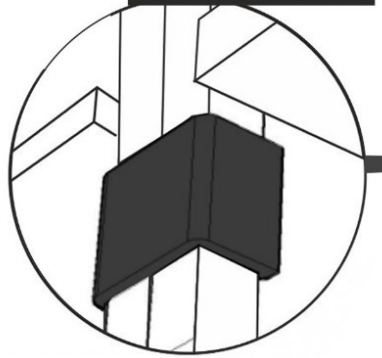


PARÇA KODLAMA / GENERAL VIEW

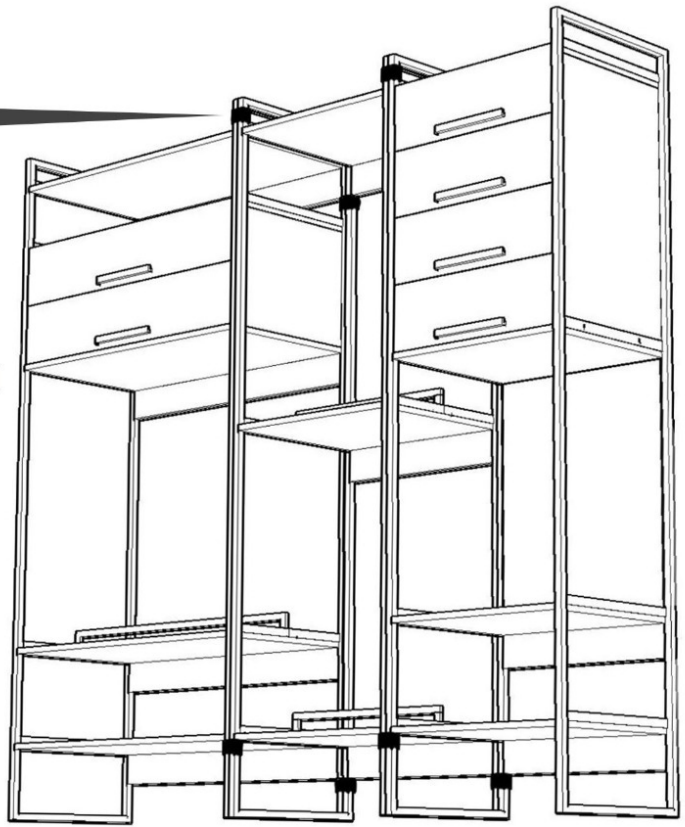
8



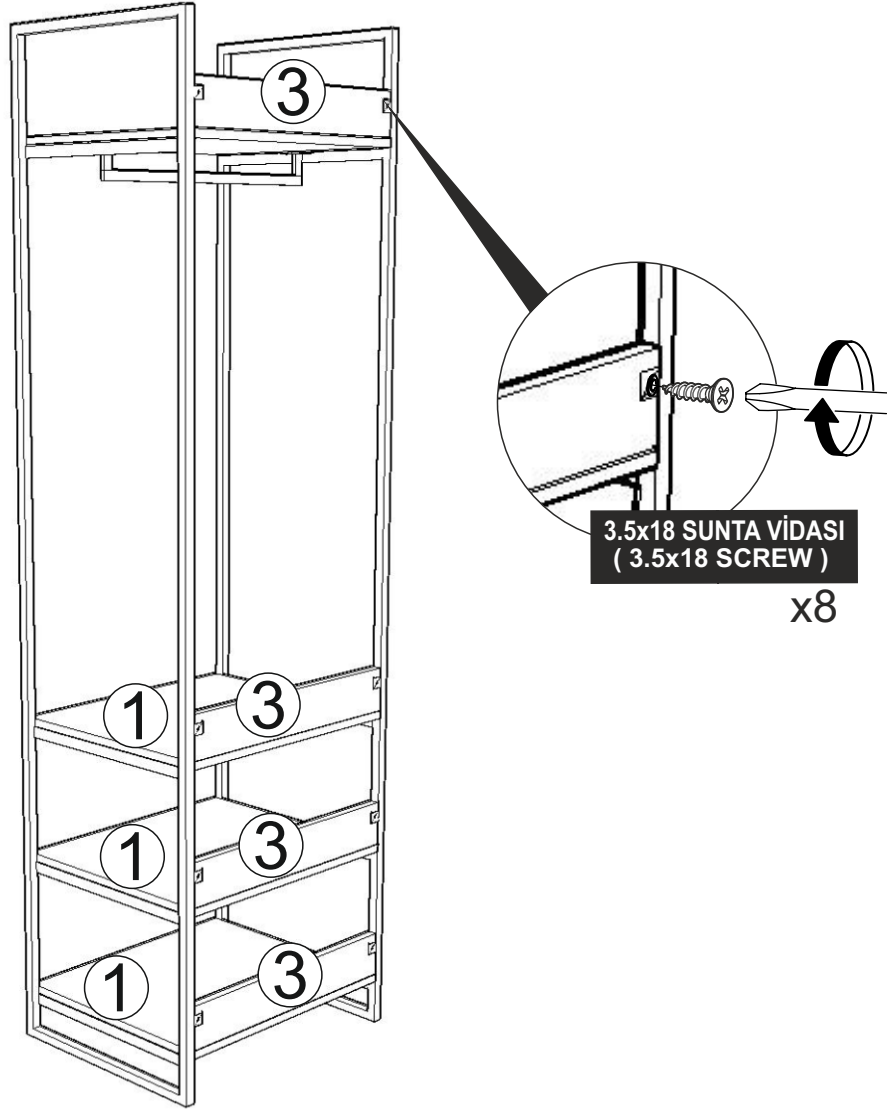
MODÜL BİRLEŞTİRME APARATI ( PLASTIC MODULE FIXING ) X4



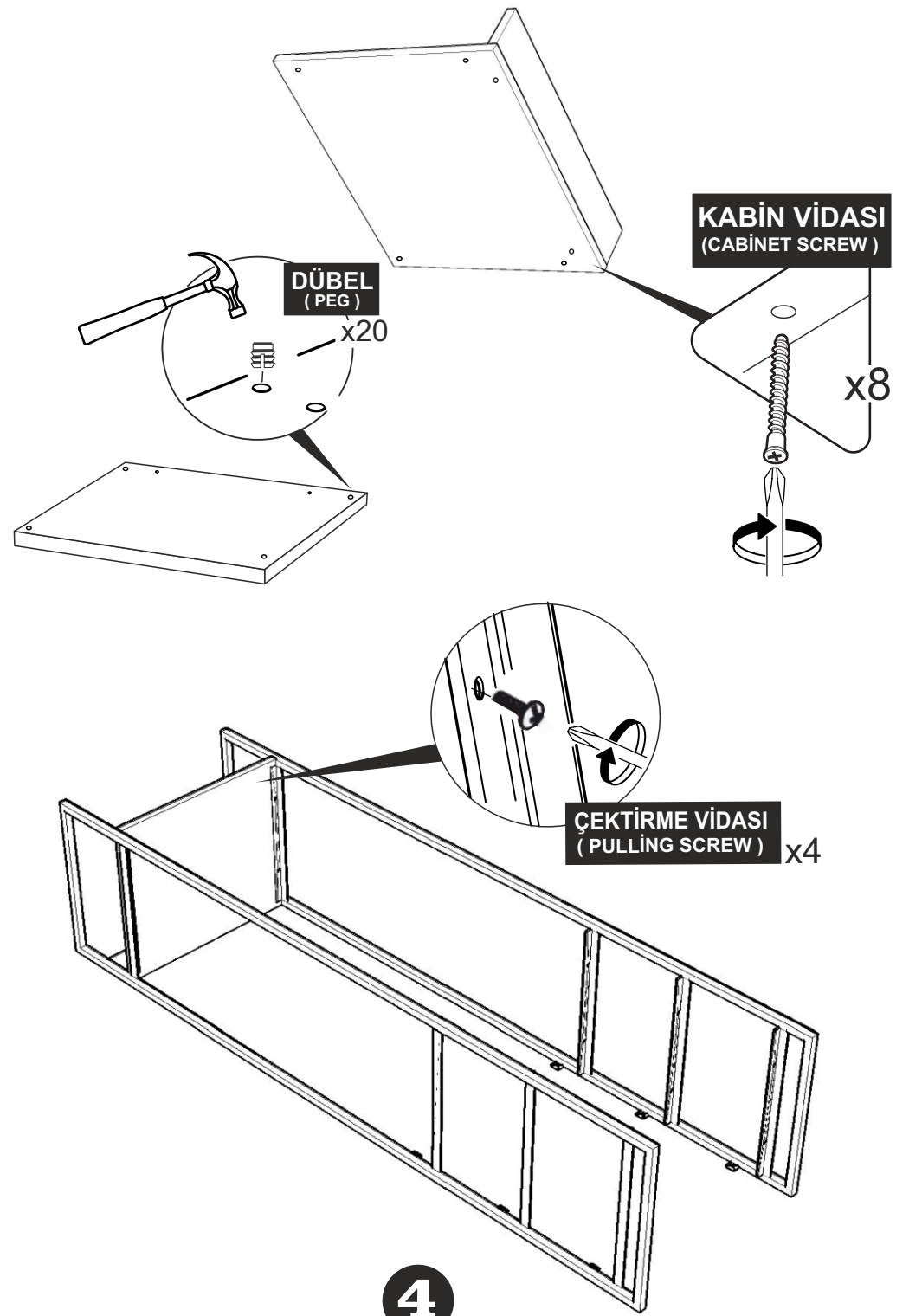
MODÜL BİRLEŞTİRME DETAYI ( MODULE FIXING DETAIL )





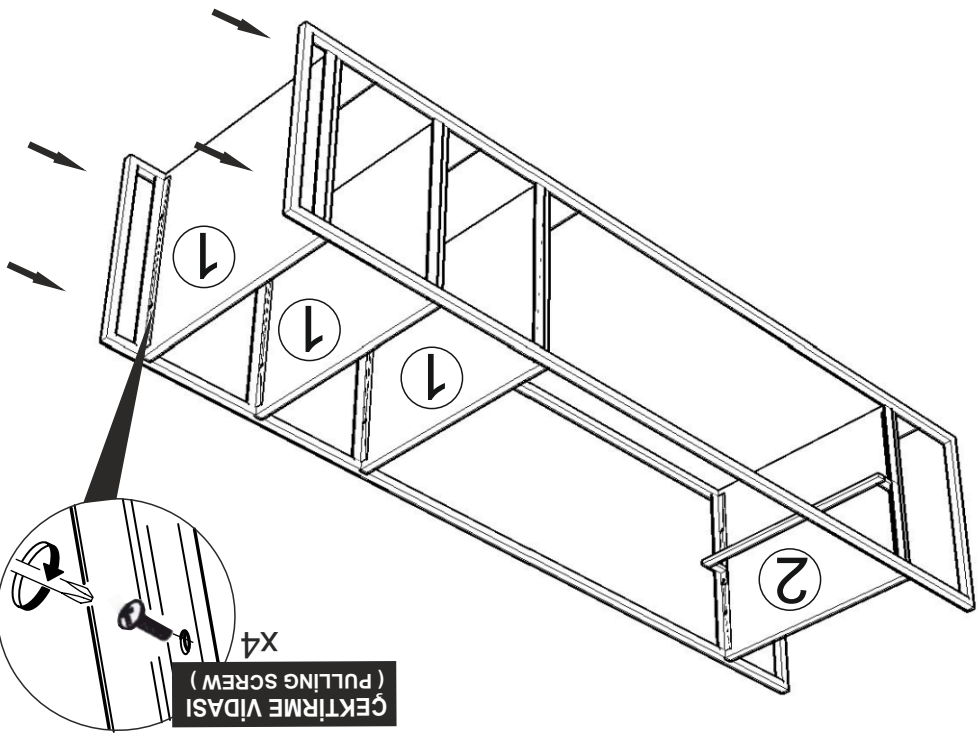
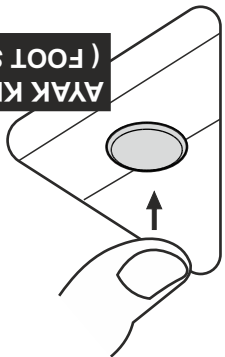


7



9

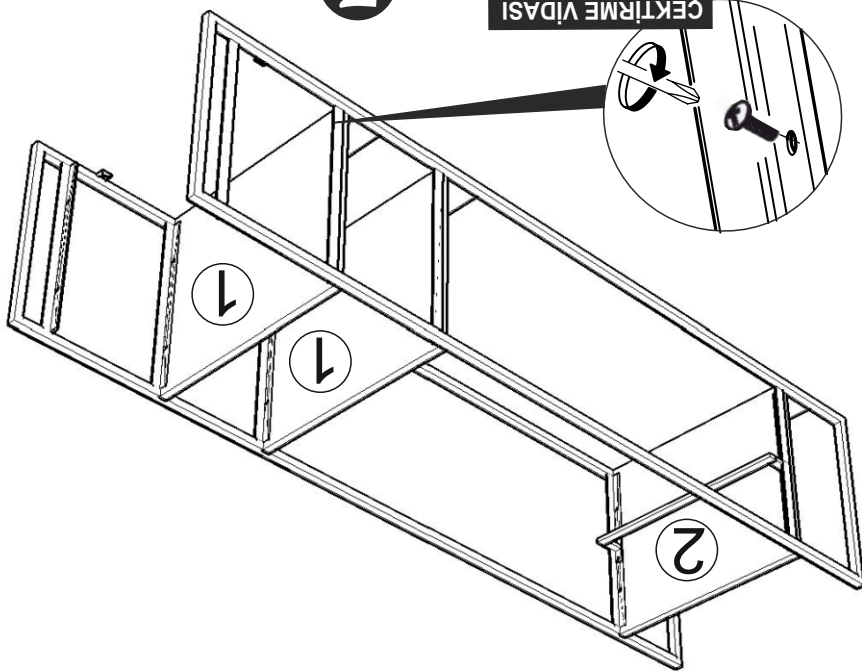
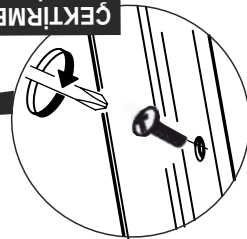
AYAK KEÇESİ (FOOT SEAL) x4



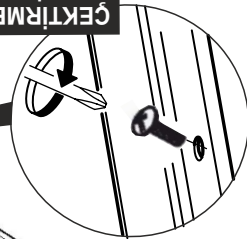
ÇEKİRME VIDASI (PULLING SCREW) x4

5

ÇEKİRME VIDASI (PULLING SCREW) x4



ÇEKİRME VIDASI (PULLING SCREW) x4



ÇEKİRME VIDASI (PULLING SCREW) x4

